

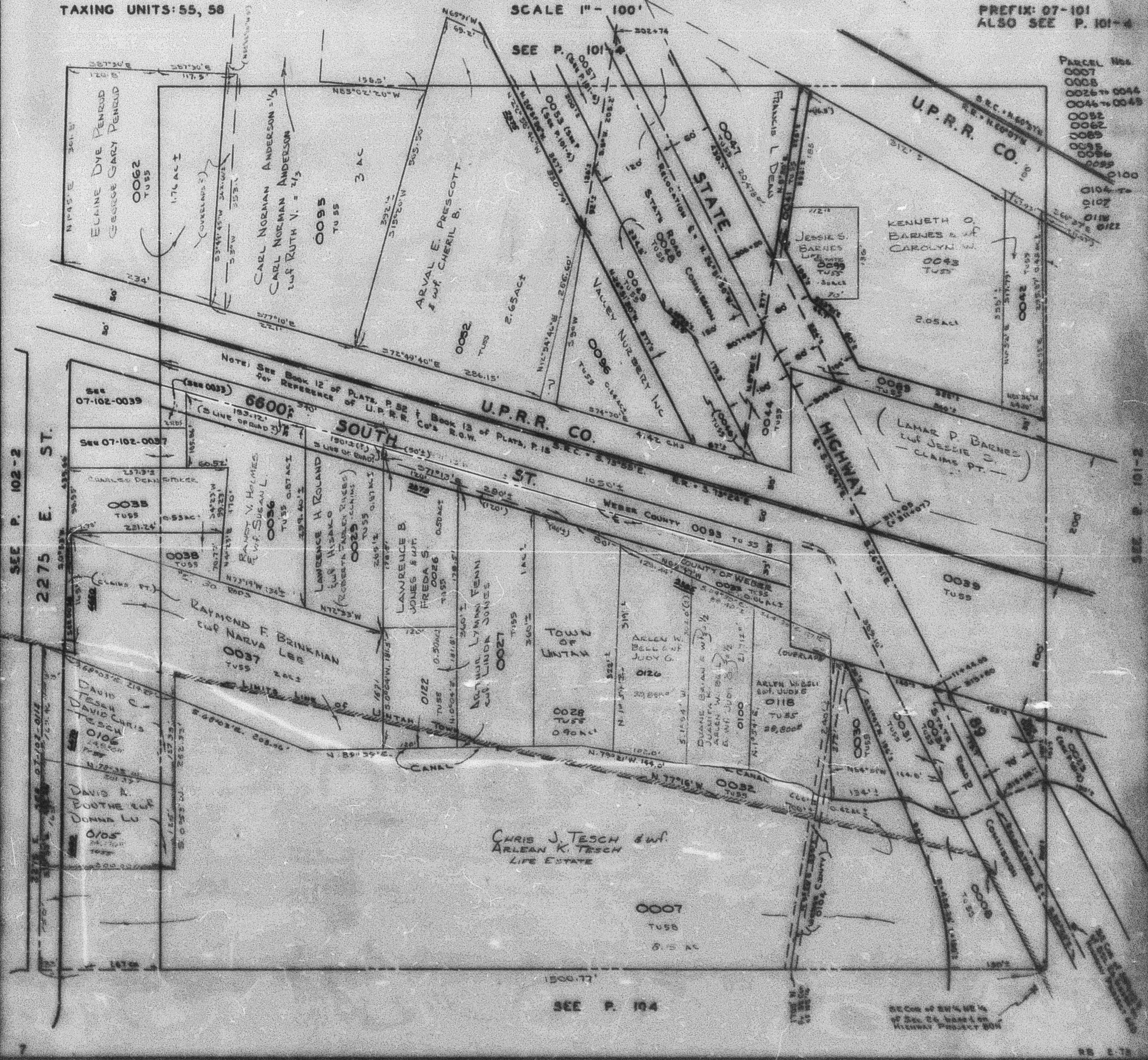
S.W. 1/4 OF N.E. 1/4
SECTION 26, T. 5N., R. 1W., S.L.B. & M.
TOWN OF UINTAH & UINTAH DISTRICT

101-3

TAXING UNITS: 55, 58

SCALE 1" = 100'

PREFIX: 07-101
ALSO SEE P. 101-4



- PARCEL Nos.
0007
0008
0026 to 0044
0046 to 0048
0052
0062
0069
0085
0086
0089
0100
0104 to
0107
0110
0122

U.P.R.R. CO.
S.E.C. 2-60753
R.E. 1-100704

KENNETH O. BARNES & WIFE
CAROLYN W. BARNES
0043
TUS

LAMAR P. BARNES
WIFE JESSIE S. BARNES
CLAIMS PT.

U.P.R.R. CO.
S.E.C. 2-15-55 E.

TOWN OF UINTAH

CHRIS J. TESCH & WIFE
ARLEAN K. TESCH
LIFE ESTATE

SEE P. 104

RECORD OF S.W. 1/4 NE 1/4
OF SEC. 26, BASED ON
HIGHWAY PROJECT 504

SEE P. 102-2

2275 E. ST.

SEE P. 101-3